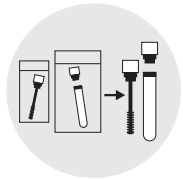


INSTRUCTIONS FOR COLLECTION

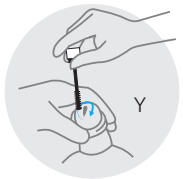
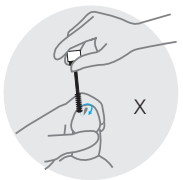
RHINOstic® Automated Swab

STEP 1 Removal



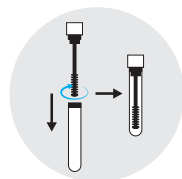
1. Carefully remove the swab portion for sample collection from the polybag without touching the collection end of the swab.
2. Remove the transport tube from the package so that after collection it is ready for the sample to be placed into the transport tube.

STEP 2 Collect Sample



3. Hold the swab portion of the collection device by the cap and collect the sample as follows:
 - a. If circumcised (no foreskin), follow diagram (X) and if uncircumcised follow diagram (Y) as you will have to roll the foreskin down before starting collection.
 - b. Hold the penis with your free hand (hand with no swab).
 - c. Using your other hand (with the swab), roll the swab clockwise just at the tip or outside the opening to the penis through which you pass urine (pee) at least 5 times.
 - d. Be sure to roll the swab completely around the opening to get the best sample and collect discharge if present (not urine). It is not necessary to put the swab deep inside the opening of the penis.

STEP 3 Seal

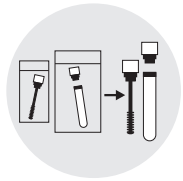


4. Remove the cap from the tube and discard. Replace the cap with the swab in the tube portion of the collection device.
5. Carefully screw the swab into the tube, so that it is completely closed. Make sure the tube is closed tightly. The original tube cap is no longer needed and should be thrown away.

INSTRUCTIONS FOR COLLECTION

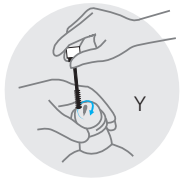
RHINOstic® Automated Swab

STEP 1 Removal



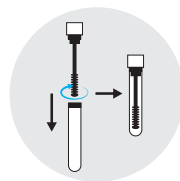
1. Carefully remove the swab portion for sample collection from the polybag without touching the collection end of the swab.
2. Remove the transport tube from the package so that after collection it is ready for the sample to be placed into the transport tube.

STEP 2 Collect Sample



3. Hold the swab portion of the collection device by the cap and collect the sample as follows:
 - a. If circumcised (no foreskin), follow diagram (X) and if uncircumcised follow diagram (Y) as you will have to roll the foreskin down before starting collection.
 - b. Hold the penis with your free hand (hand with no swab).
 - c. Using your other hand (with the swab), roll the swab clockwise just at the tip or outside the opening to the penis through which you pass urine (pee) at least 5 times.
 - d. Be sure to roll the swab completely around the opening to get the best sample and collect discharge if present (not urine). It is not necessary to put the swab deep inside the opening of the penis.

STEP 3 Seal

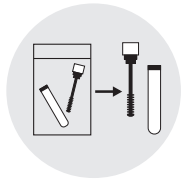


4. Remove the cap from the tube and discard. Replace the cap with the swab in the tube portion of the collection device.
5. Carefully screw the swab into the tube, so that it is completely closed. Make sure the tube is closed tightly. The original tube cap is no longer needed and should be thrown away.
6. If two swabs are included in your kit, repeat steps 1-5 for the second one.

INSTRUCTIONS FOR COLLECTION

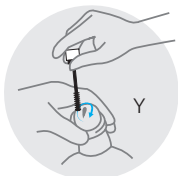
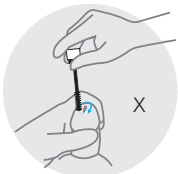
RHINOstic® Automated Swab

STEP 1 Removal



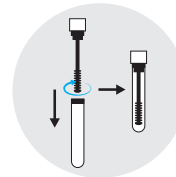
1. Carefully remove the swab portion for sample collection from the polybag without touching the collection end of the swab.
2. Remove the transport tube from the package so that after collection it is ready for the sample to be placed into the transport tube.

STEP 2 Collect Sample



3. Hold the swab portion of the collection device by the cap and collect the sample as follows:
 - a. If circumcised (no foreskin), follow diagram (X) and if uncircumcised follow diagram (Y) as you will have to roll the foreskin down before starting collection.
 - b. Hold the penis with your free hand (hand with no swab).
 - c. Using your other hand (with the swab), roll the swab clockwise just at the tip or outside the opening to the penis through which you pass urine (pee) at least 5 times.
 - d. Be sure to roll the swab completely around the opening to get the best sample and collect discharge if present (not urine). It is not necessary to put the swab deep inside the opening of the penis.

STEP 3 Seal



4. Place the cap with the swab in the tube portion of the collection device.
5. Carefully screw the swab into the tube, so that it is completely closed. Make sure the tube is closed tightly.