

# AlteRead™ Wireless Single 2D & 1D barcode camera reader

## Installation & quick start guide



Included in the box:

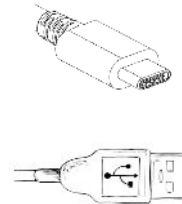
- AlteRead Wireless Single 2D & 1D barcode camera reader
- USB charging cable
- USB dongle
- Installation & quick start guide

### 1. Connect to the computer to charge the Wireless AlteRead Single 2D & 1D barcode camera reader

Remove the product from the packaging, insert the RJ45 connector into the rear of the reader where it says USB

Plug the other end of the connection cable (USB connector) into any available USB port on the host device or USB wall charger

Switch the reader on and the reader will start to charge you should see a red ring around the read button, once fully charged this will change to a green ring.



### 2. Using the AlteRead Single 2D & 1D barcode camera reader in wired mode

The reader will function when connected to a PC with the USB C to USB cable as a keyboard wedge device.

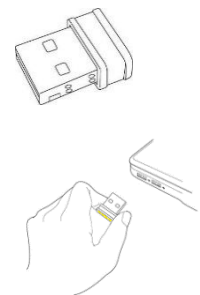
Present the 1D or 2D barcode to the reader, the imaging light will illuminate. A beep sound and a green light indicates when the barcode has been decoded successfully

The decoded barcode number will display in any open application

### 3. Using the AlteRead Single 2D & 1D barcode camera reader via wireless receiver mode

To use the reader wirelessly switch off the device once fully charged, remove the USB C cable from the reader, insert the small 2.4GHz wireless receiver (this has a small yellow label) into a USB port on the host device

Switch the reader back on and your reader to go! When reading the reader will beep and you the ring around the button will flash blue, if it is not connected the ring will be red and beep three times



### 4. Using the AlteRead Single 2D & 1D barcode camera reader via Bluetooth connect to an Android device (HID)

To use the reader in Bluetooth mode, switch off the device once fully charged, remove the USB C cable from the reader. Switch the reader back on, and scan the Bluetooth barcode, the blue LED light will be flashing.

On the android device select home | Menu | Settings | Wireless & Networks | Bluetooth settings. Make sure the device has Bluetooth "On". In the list of found devices, select "C Barcode Scanner". Tap pair.

The Reader will make one long beep after Bluetooth paired and LED light will turn to solid blue (no blinking) and you are ready to go!

5. **Using the AlteRead Single 2D & 1D barcode camera reader via Bluetooth connect to an Apple iOS Device (HID)**

To use the reader in Bluetooth mode, switch off the device once fully charged, remove the USB C cable from the reader. Switch the reader back on, and scan the Bluetooth barcode, the blue LED light will be flashing.

On the Apple iOS device start a Bluetooth device search. IOS: Tap settings | General | Bluetooth. Turn on a Bluetooth device and a search will begin. In the list of found devices, select "C Barcode Scanner". Tap pair.

The Reader will make one long beep after Bluetooth paired and LED light will turn to solid blue (no blinking) and you are ready to go!

6. **Using the AlteRead Single 2D & 1D barcode camera reader via Bluetooth to a Windows PC (HID)**

To use the reader in Bluetooth mode, switch off the device once fully charged, remove the USB C cable from the reader. Switch the reader back on, and scan the Bluetooth barcode, the blue LED light will be flashing.

On the computer start a Bluetooth device search. Computer: Open devices and printers and select "add a device". In the list of found devices, select "C Barcode Scanner", click next, and follow the remaining screens to complete the wizard.

The Reader will make one long beep after Bluetooth paired and LED light will turn to solid blue (no blinking) and you are ready to go!

7. **Settings**

Reader settings can be changed using the below barcodes. To ensure the required barcode is read, it is recommended that the Single reader is held in one hand and pointed at the barcode to be read.

Wireless Enable (default)



USB HID Keyboard mode (default)



USB Virtual COM port mode



Bluetooth HID mode



Terminators:



None

Duplicate read timeout /  
Delay between reads:



No delay

Scanning modes:



Button mode (default)



CR & LF (default)



1 second delay



Continuous scan mode



CR



5 second delay



Auto sense tube / rack mode



TAB



3 second delay



Country keyboard set up:



American keyboard Layout  
(This is default)



UK keyboard Layout



Italy keyboard Layout



Denmark keyboard Layout



France keyboard Layout



Spain keyboard Layout



Swiss German keyboard Layout



Japan keyboard Layout



Finland keyboard Layout



Sweden keyboard Layout



Netherlands keyboard Layout



Belgium French keyboard Layout



Germany keyboard Layout

